

Packing List

In addition to this guide, the package includes the following items:



ECAN-240-FD



Screw Driver

Technical Support

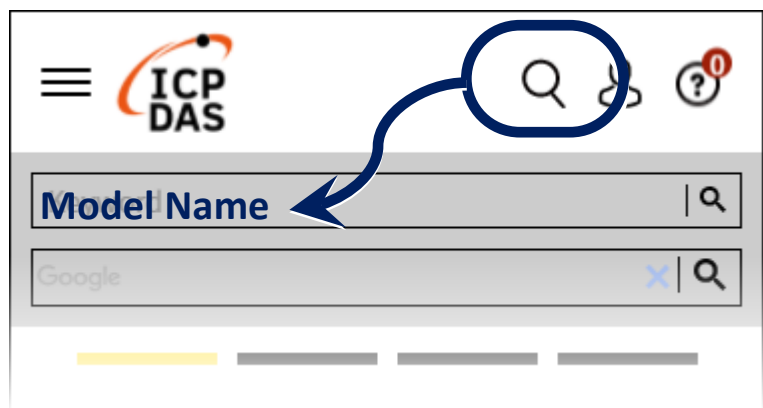
service@icpdas.com

www.icpdas.com

Resources

How to search for drivers, manuals and spec information on ICP DAS website.

- For Mobile Web



- For Desktop Web



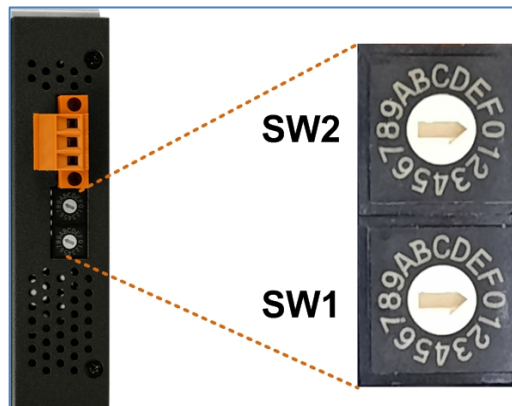
1

Connecting the Power Supply and the Host PC

Before using ECAN-240-FD device, some things must be done.

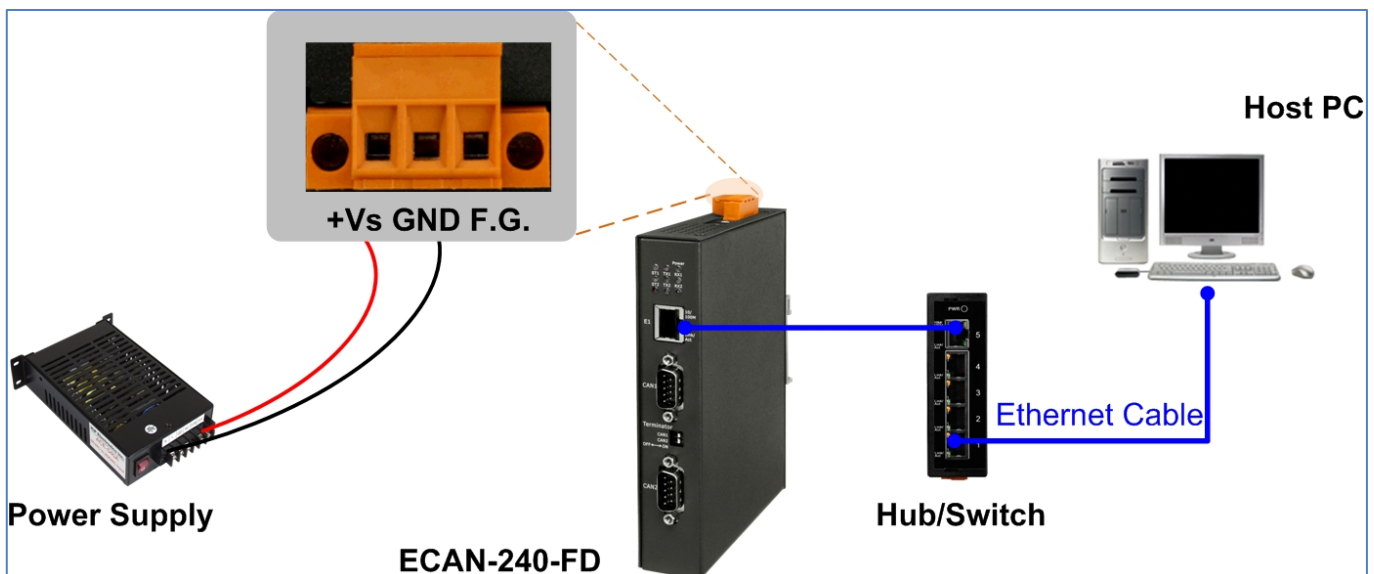
Step 1: Prepare one ECAN-240-FD

Check that the SW1/SW2 rotary switches are in the "0/0" position



Step 2: Connect both the ECAN-240-FD and the Host computer

Connect both the ECAN-240-FD and the Host computer to the same sub-network or the same Ethernet Switch, and then power on the ECAN-240-FD. Refer to following figure for illustrations of how to do this.



2

Configuring the Network Settings

When users want to search and change the default network settings of the module, the eSearch Utility tool may be needed.

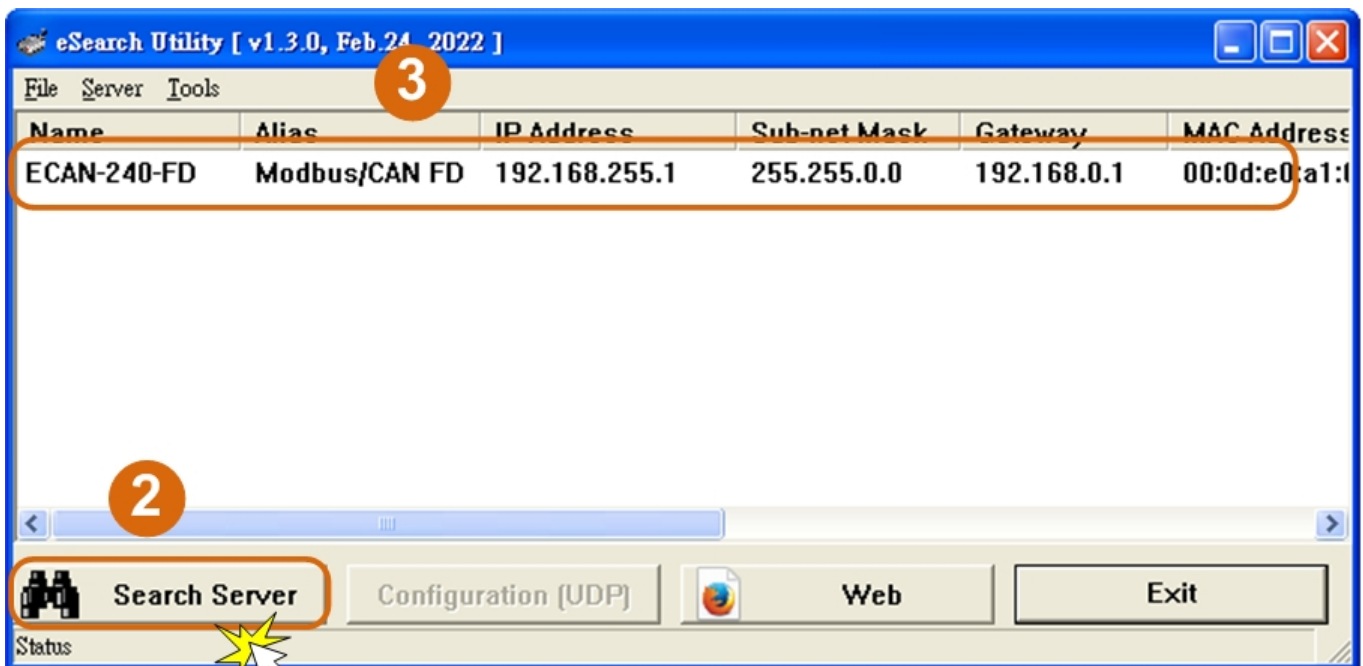
Step 1: Install the eSearch Utility

The software is located at:

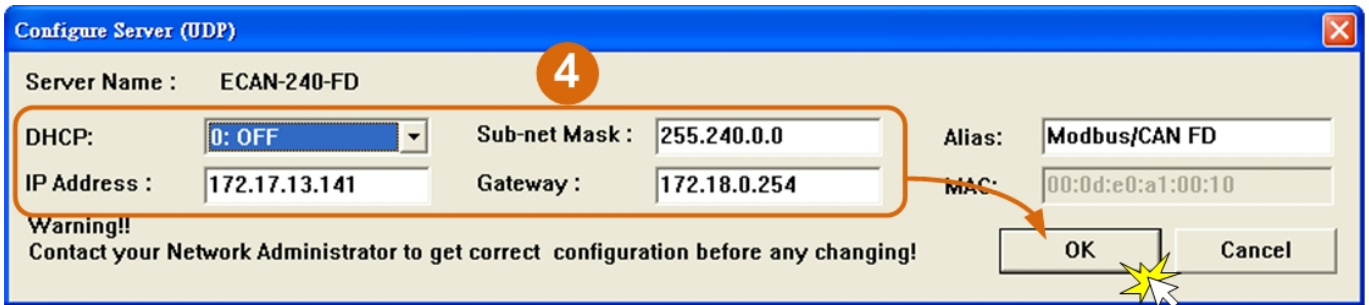
<https://www.icpdas.com/en/download/show.php?num=1327&nation=US&kind1=&model=&kw=esearch>

Step 2: Setting up ECAN-240-FD Network Settings

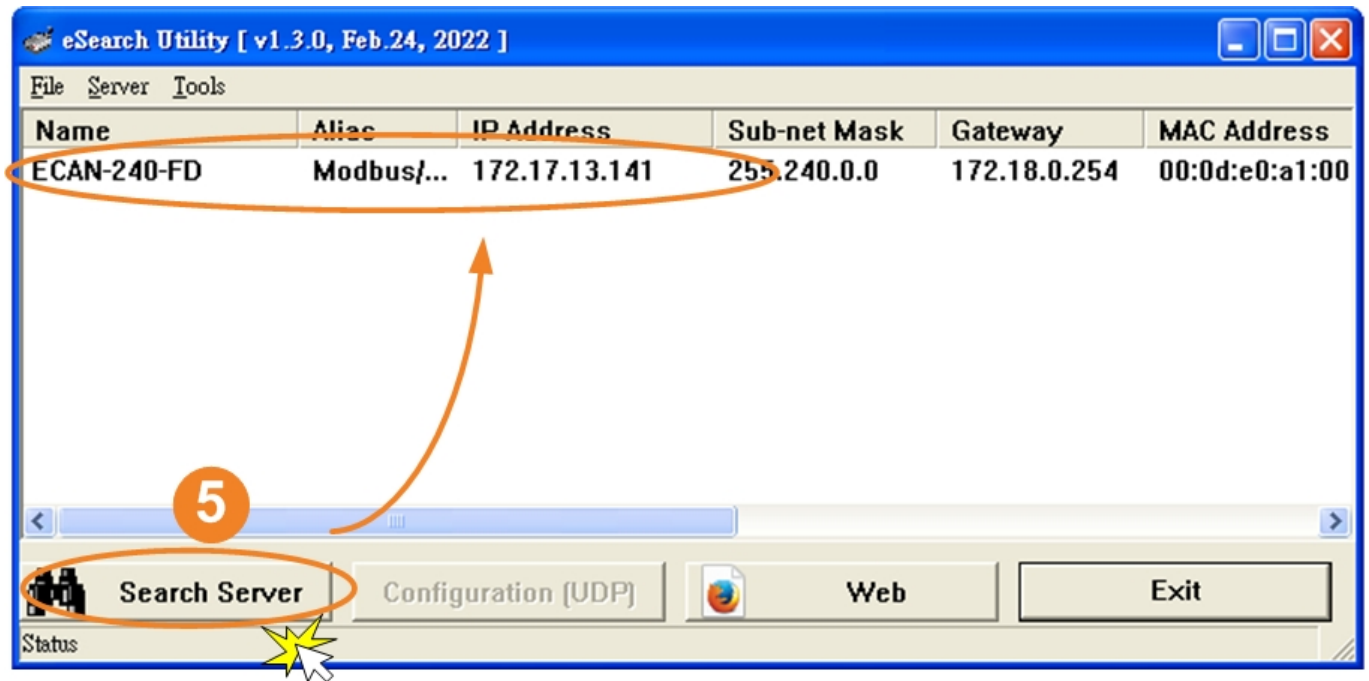
1. Open the eSearch Utility
2. Click the **“Search Server”** button to search for the ECAN-240-FD module
3. Once the search process is complete, double-click the name of the ECAN-240-FD module to open the **“Configure Server”** dialog box.



4. Enter the network settings information, including the IP, Mask and Gateway addresses, and then click “OK” button



5. Wait 2 seconds and click “**Search Server**” button again to ensure the ECAN-240-FD is working well with new configuration.



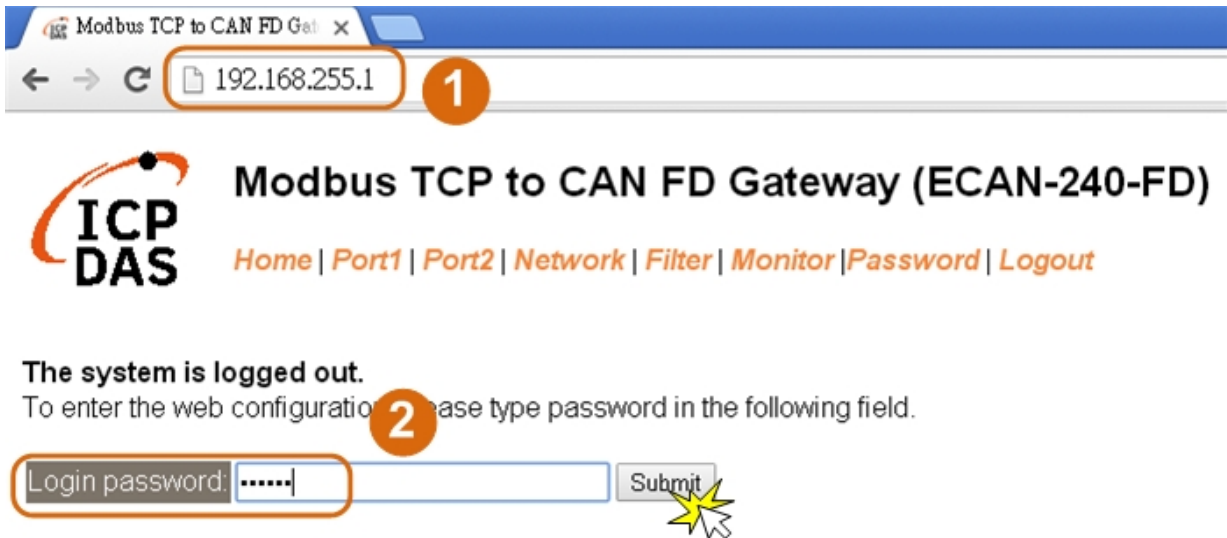
Factory Default Settings of ECAN-240-FD Module:

IP Address	192.168.255.1
Subnet Mask	255.255.0.0
Gateway	192.168.0.1

3

Configuring the CAN Port

1. Open a web browser, such as Google Chrome, Internet Explorer, or Firefox, and enter the URL for the ECAN-240-FD module in the address bar of the browser, or click the “Web” button in the eSearch Utility. You can right click the IP address field and click the “Copy to Clipboard” to copy the IP address.
2. When the login screen is displayed, enter the password (use the default password: **admin**) in the login password field, and then click the “**Submit**” button to enter the configuration web page.



Note: For the first time to use the ECAN-240-FD device, you may need to change the default password to other value.

- Click the “Port1/2” tab to display the Port1/2 Settings page.



Modbus TCP to CAN FD Gateway (ECAN-240-FD)

[Home](#)
[Port1](#)
[Port2](#)
[Network](#)
[Filter](#)
[Monitor](#)
[Password](#)
[Logout](#)

Model Name:	ECAN-240-FD	Alias Name:	CAN FD Gateway
Firmware Version:	V2.00 [2023/07/17]	MAC Address:	00-0D-E0-20-00-10
IP Address:	192.168.255.1	Communication Mode:	Modbus TCP Server
Initial Switch:	00	Local Command Port:	502

- Select the appropriate CAN Port and Filter Settings from the relevant drop down options. Click “Update Settings” to save your settings.

CAN Port 1 Settings

CAN Port Settings	Current	Updated	Comment
CAN FD Specification:	ISO	ISO ▾	ISO/Non-ISO sp
Arbitration Bit Rate (kbps):	1000.000	1000.000	e.g.: 1000.000,
Data Phase Bit Rate (kbps):	1000.000	1000.000	e.g.: 1000.000,
Arbitration Sample Point (%):	87.50	87.50	e.g.: 87.50, 1.00
Data Phase Sample Point (%):	87.50	87.50	e.g.: 87.50, 1.00
CAN Filter Settings	Current	Updated	Comment
Reject Remote Standard Frames:	Disable	Disable ▾	Disable/Enable
Reject Remote Extended Frames:	Disable	Disable ▾	Disable/Enable
Standard ID Filter (Hex):	0x000	000	11-bit ID filter, 0
Standard ID Mask (Hex):	0x000	000	11-bit ID mask,
Extended ID Filter (Hex):	0x00000000	00000000	29-bit ID filter, 0
Extended ID Mask (Hex):	0x00000000	00000000	29-bit ID mask,