



## GW-7663

PROFINET to Modbus TCP Gateway

### Features

- Protocol: PROFINET IO Device
- PROFINET Conformance Class B and RT Class 1
- Cyclic Time: 1ms (min)
- Generic GSDML File Provided (Version 2.25)
- Max length of input/output data is 512/512 Bytes
- Support Modbus TCP format
- Support Modbus Master and Slave mode
- Provide LED indicators
- 4 kV Contact ESD protection for any terminal
- Wide range of power input (+10 ~ +30 VDC) and operating temperature (-25 ~ +75°C)



### Introduction

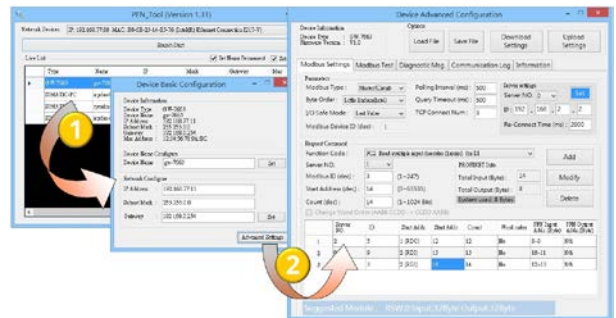
The GW-7663 specially designed for PROFINET IO device. It allows PROFINET controller to access Modbus TCP devices. These Modbus devices maybe a PLC, a sensor, ICPDAS I-8KE4-MTCP, ET-7000 series modules and so forth. We also provide a utility software for users to configure GW-7663. By using this module, users can put their Modbus devices into PROFINET network easily.

### Modbus Support

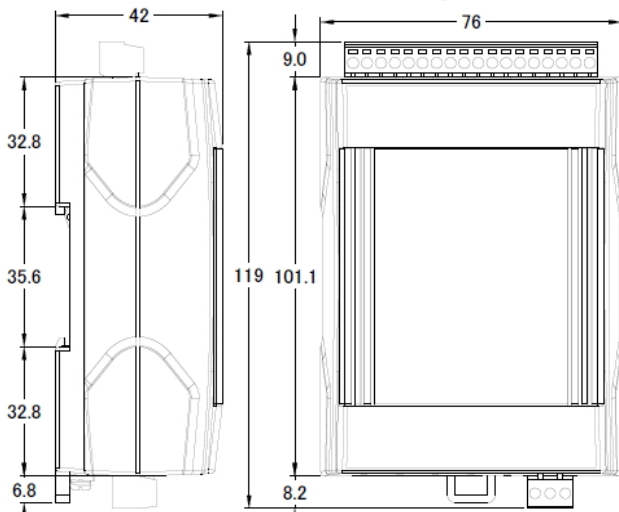
Code	Name	Description
01	Read Coil Status	Read the ON/OFF status of discrete outputs in the slave
02	Read Input Status	Read the ON/OFF status of discrete inputs in the slave
03	Read Holding Registers	Read the binary contents of holding registers in the slave
04	Read Input Registers	Read the binary contents of input registers in the slave
05	Force Single Coil	Write a single output to either ON or OFF in the slave
06	Preset Single Register	Write an integer value into a single register in the slave
15	Force Multiple Coils	Write each coil in the sequence of coils to either ON or OFF in the slave
16	Preset Multiple Registers	Write a block of contiguous registers in the slave

### Utility Features

- Provide Modbus device setting
- Show diagnostic messages
- Provide Modbus test function
- Provide Communication Log of Modbus network



### Dimensions (Units: mm)



### Rotary Switch Definition

Position	Module configuration	
	Output (byte)	Input (byte)
0	32	32
1	64	64
2	128	128
3	256	256
4	384	384
5	512	512
6~7	Reserved	
8~F	Bootloader mode	

## Hardware Specifications

PROFINET Interface	
Protocol	PROFINET IO Device
Conformance Classes	Class B
Services	RTC, RTA, CL-RPC, DCP, LLDP, I&M
Cycle Time	1 ms (min.)
Ethernet Interface	
Controller	10/100Base-TX Ethernet Controller (Auto-negotiating, Auto_MDIX)
Connector	RJ-45 x 2 (LED indicators) , Integrated 2-Port Switch
Services	ICMP, IGMP, ARP, DHCP, TELNET, TFTP, SNMP, VLAN Priority Tagging
LED	
Round LED	AP LED, BOOT LED, ERR LED
Power	
Power supply	Unregulated +10 ~ +30 V <sub>DC</sub>
Protection	Power reverse polarity protection, Over-voltage brown-out protection
Power Consumption	3.4W
Mechanism	
Installation	DIN-Rail
Dimensions	42 mm x 76 mm x 110 mm (W x L x H)
Environment	
Operating Temp.	-25 ~ 75 °C
Storage Temp.	-30 ~ 80 °C
Humidity	10 ~ 90% RH, non-condensing

## Application



## Ordering Information

GW-7663 CR	PROFINET to Modbus TCP Gateway (RoHS)
------------	---------------------------------------