



EIP-2055

Isolated 8-ch DI and 8-ch DO EtherNet/IP module

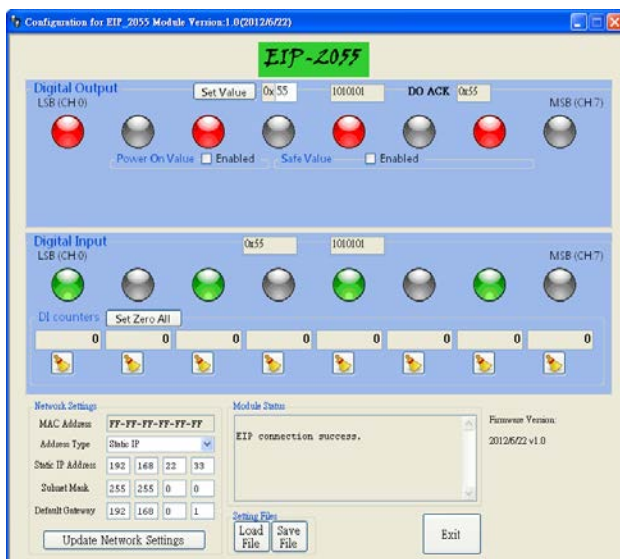
Introduction

The EIP-2055 is a remote digital I/O module with 8 inputs and 8 outputs. It is designed as an EtherNet/IP adapter. With 2 Ethernet ports, the EIP-2055 allows daisy chain connection which permits the flexibility in locating devices, eases installation and lowers infrastructure costs. Users can obtain the I/O as well as the connection status of the EIP-2055 by the LEDs. In addition, ICPDAS provides software utility to easily configure and test the EIP-2000 modules via Ethernet.

Utility Features

ICPDAS provides the EIP-2000 configuration utility for Windows 2K/XP/Vista and Win 7.

- Network parameters configuration
- Settings for power-on value and safe value.
- DI counters inspection
- Easy test to transmit/receive the I/O status by EtherNet/IP
- Setting files management



Features

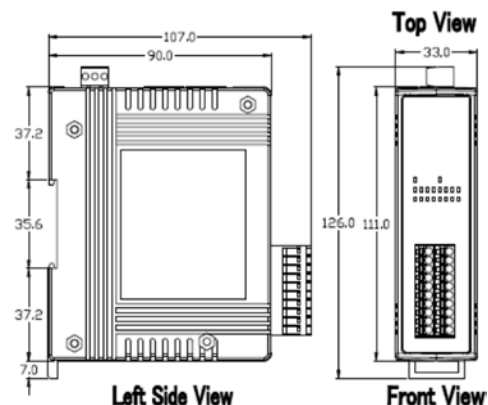
- Powerful 32-bit MCU handles efficient network traffic
- 10/100 Base-TX Ethernet, RJ-45 x 2 (Auto-negotiating, auto MDI/MDIX, LED Indicators)
- Support ARP, TCP, UDP, ICMP, DHCP, BOOTP and TFTP protocols
- Easy firmware update via Ethernet
- Removable terminal block connector
- LED display to indicate the I/O status
- Built-In I/O — DI/Counter: 8 Channels
DO: 8 Channels
- Power-On-Value
- Safe-Value
- RoHS compliant



Wire connection

Input	ON	OFF
Relay Contact (Dry)	Relay Close → DIx GND	Relay Open → DIx GND
Open Collector (Dry)	ON → DIx GND	OFF → DIx GND
Relay Contact (Wet)	+ → DI.COM Relay Close → DIx	+ → DI.COM Relay Open → DIx
NPN Output (Wet)	ON → DI.COM OFF → DIx	OFF → DI.COM ON → DIx
Output	ON	OFF
Drive Relay	Ext.PWR → DOx DOx → Ext.GND	Ext.PWR → DOx DOx → Ext.GND
Resistance Load	Ext.PWR → DOx DOx → Ext.GND	Ext.PWR → DOx DOx → Ext.GND

Dimensions (Units: mm)



■ Hardware Specifications

Digital Input		
Channels		8
Input Type		Dry Contact: Source, Wet Contact: Sink / Source
Dry Contact Level		Off Voltage Level: OpenOn Voltage Level: Close to GND
Wet Contact Level		Off Voltage Level: +1V maxOn Voltage Level: +5 V _{DC} ~ +50 V _{DC}
Counters	Max. Counts	32-bit (4294967295)
	Max. Input Frequency	3KHz
Input Impedance		7.5 kΩ
Overvoltage Protection		+70 V _{DC}
Digital Output		
Channels		8
Type		Open Collector
Sink/Source(NPN/PNP)		Sink
Load Voltage		+3.5 ~ +50 V
Max. Load Current		650 mA per channel
Overload Protection		1.4 (with short-circuit protect)
Overvoltage Protection		+60V _{DC}
Communication Interface		
Connector		10/100 Base-TX, 8-pin RJ-45 x 2 . Support daisy chain connection
Standard Supported		Ethernet/IP(Adapter)
Power		
Reverse Polarity Protection		Yes
Power Consumption		2.9W
Input Voltage Range		10V ~ 30V
Mechanism		
Installation		DIN-Rail or Wall mounting
Dimensions		33mm x 127mm x 99mm (W x L x H)
Environment		
Operating Temperature		-25°C ~ +75°C
Storage Temperature		-30°C ~ +80°C
Humidity		10% ~ 90% RH ,Non-condensing

■ Application



■ Ordering Information

EIP-2055 CR	Isolated 8-ch DI & 8-ch DO Ethernet/IP Module (RoHS)
--------------------	--